



# Campus 2 Campus

Design to re-connect | Dr Maria Salomons

10-3-2025





Your host:

# Maria Salomons

Lecturer at Delft university of TechnCivil Engineering,  
Transport & Planning



[a.m.salomons@tudelft.nl](mailto:a.m.salomons@tudelft.nl)

<https://amsalomons.weblog.tudelft.nl/>

## ***Expertise:***

Intersection control, geometric design

Supervision graduation research bachelor:  
any topic related to transport

Supervision graduation research master:  
many topics related to transport



Your host:

# William Riggs (Billy)

Professor at University of San Francisco,  
College of Arts and Sciences



[wriggs@usfca.edu](mailto:wriggs@usfca.edu)

[William Riggs | University of San Francisco](#)

## ***Expertise:***

William (Billy) Riggs, Ph.D., AICP, LEED AP is a professor at the University of San Francisco School of Management and the Director of the Autonomous Vehicles and the City Initiative.



Listens, Analyses and Draws:

# Mark van Huystee

Visualizer/designer

 [info@huystee.com](mailto:info@huystee.com)  
<https://zakelijk-tekenen.nl>

## **Expertise:**

As a freelance visualiser/designer brings creative ideas to life across various fields, by live drawing sessions.



# The C2C Workshop Team



Tom  
Alkim

Project lead Learning  
Communities TUD &  
education innovator



Linette  
Bossen MSc

Strategic Advisor  
Connected &  
Automated Mobility

[www.evengroenevrienden.nl](http://www.evengroenevrienden.nl)



Rutger  
van der Pijl

Senior  
projectmanager  
urban development  
city of Delft /  
Grondwerk  
Projectmanagers



Abel  
Svejda

Student Assistent –  
Learning  
Communities



Quinten  
Zee

Education &  
Research  
Coordinator  
GreenTU | TU Delft

# Presentation Content

01

Welcome to  
TU Delft  
Campus

02

Delft Campus  
Area  
Development

03

C2C – Current  
Connections

04

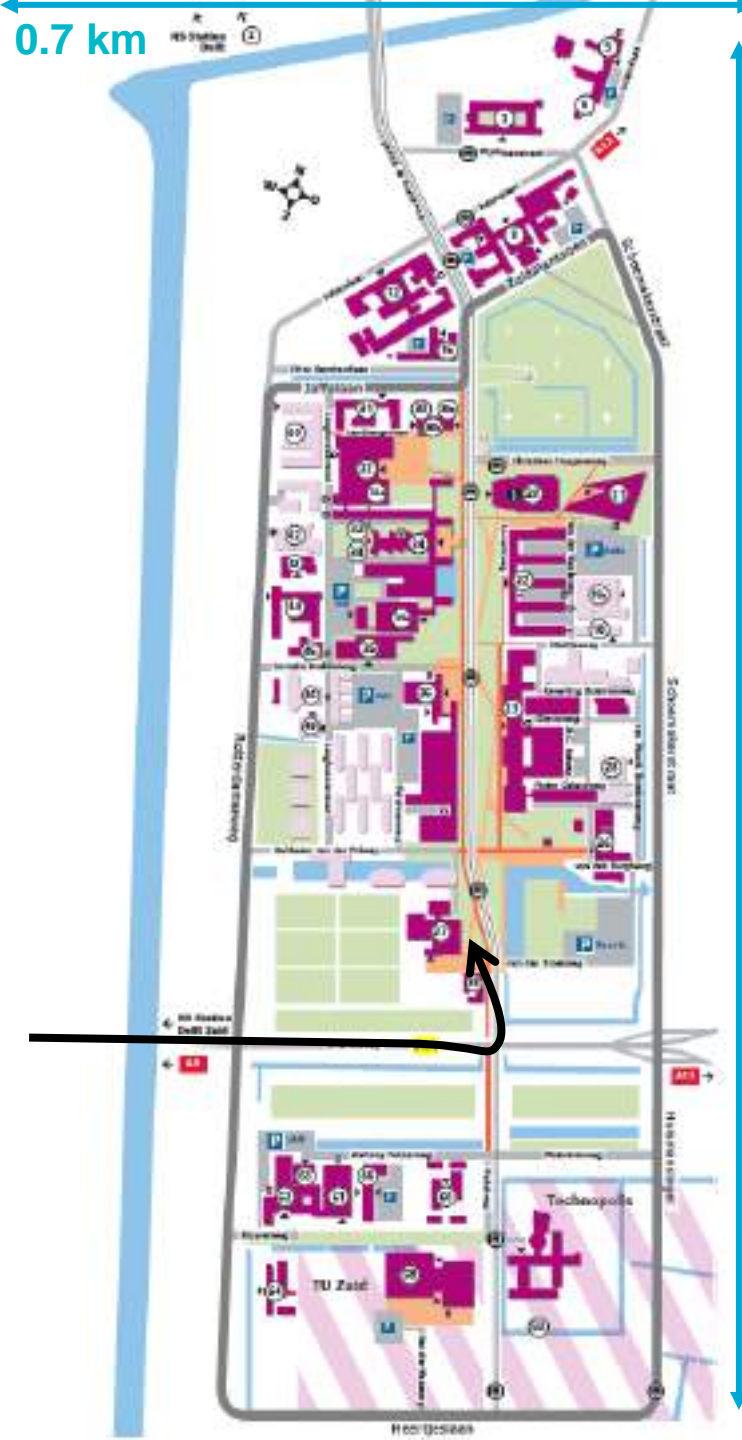
Urban Design  
in the  
Netherlands

05

The  
Challenge!

01

# Welcome to TU Delft campus



# Welcome to TU Delft Campus

This is the map of the campus of Delft University of Technology

- The arrow is how we arrived at our current location
- The campus extends to the south and the north (2 km by 0.7 km)





Library

# Welcome to TU Delft Campus

## Departments and other buildings

- Some iconic buildings
- 66 buildings

Civil Engineering and Geosciences (CEG)



Aula



Electronic Engineering,  
Mathematics and  
Computer Sciences (EEMCS)





# Rehaul TU Delft Campus

From Mekel<sup>road</sup>weg to Mekel<sup>parc</sup>park 2004-now

- A lot more green
- No cars
- Cyclists, pedestrians,
- Public transport in future (2026? 2027?)





# Welcome to TU Delft Campus

## How to reach the campus other than via station Delft Campus

- There is public transport between station Delft and the campus:
  - Bus connection
  - A tram line is under construction (long story – 20 years)



02

# Delft Campus Area Development



**Delft Zuid is het op één na 'slechtste' station van heel Nederland**



Station Delft Campus, 30 maart 2024

## Station Delft Campus klimt naar tweede plek in overzicht van beste NS-stations

Ten opzichte van vorig jaar is Delft Campus opnieuw een grote stijger in het overzicht van beste NS-stations van Zuid-Holland. In 2021 is het station helemaal vernieuwd en dat is te merken aan de waardering. Het eerste energieneutrale station van Nederland krijgt een 7,3.

Bron: Delft 13/03/24 08:10

# Station - Area Development

Station Delft Campus has had a major rehaul

- FKA station Delft Zuid<sup>South</sup>
- From second worst (2019), to second best (2024)
- Zero-energy station with solar panels
- New tunnel for cyclists and pedestrians





# Station - Area Development

2050



Plan to redesign the area of station Delft Campus to a “city campus”

Area development stops here?

# 03

Delft Campus



C2C Current Connections

Campus  
TU Delft



# C2C Current Connections

## From station Delft Campus to university

- Convenient bicycle connection
- Quite busy in rush-hour (September around 08:32)
- Bicycle theft and vandalism







# C2C Current Connections

Along busy road (N470)

- Not pleasant for both cyclists and pedestrians







# C2C Current Connections

## From station Delft Campus to university

- Outside super rush-hour (September around 08:32) convenient bicycle connection
- Pedestrian route
  - Quite long walking distance (> 1 km to nearest building)
  - A small part is pleasant, but bad pavement (and muddy)
  - Alternative: on bicycle path







# C2C Current Connections

From station Delft Campus to university

- Via station Delft, no direct bus

08:10 → 08:36	26m
 ·  · 	€ 2,09
1	2



Total travel time:

9+26+8= 43 min Directly via Delft is much faster



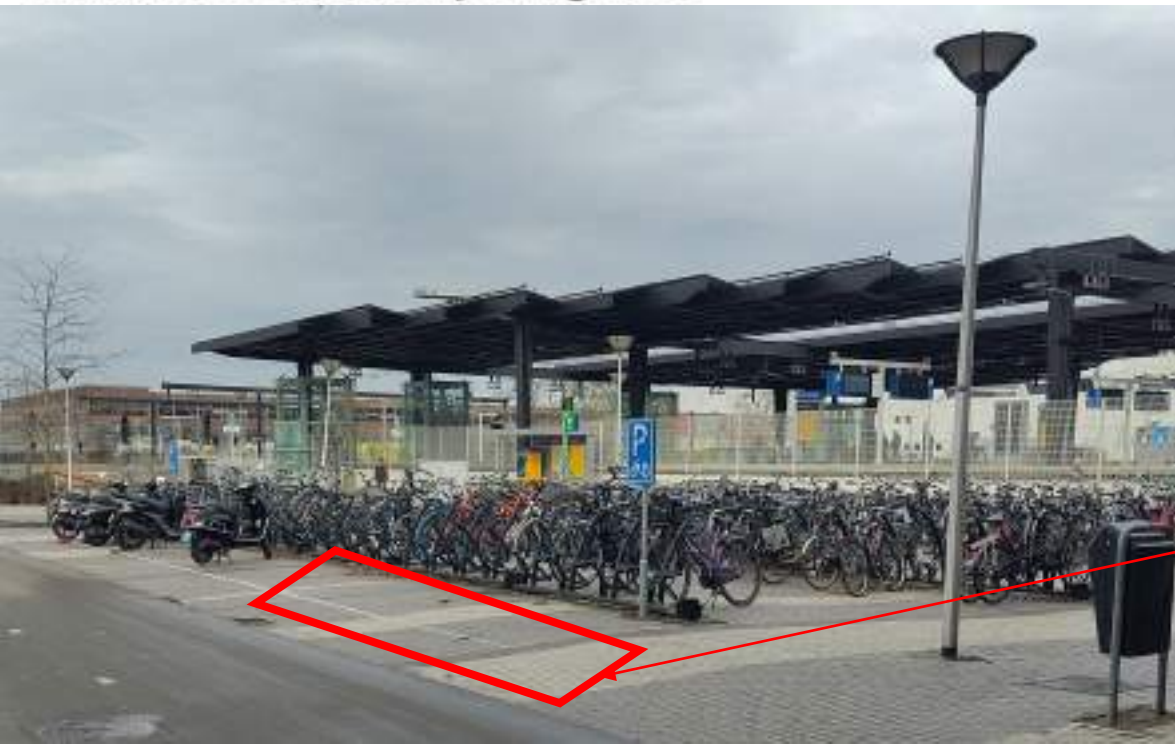
# C2C Current Connections

## From station Delft Campus to university

- Few or no shared micro-mobility options
- Vandalism-problem

De brandweer maakt weer en ander keer voor een scooterveend. © Delft25

**Vier keer op rij gaat deelscooter in vlammen op: Go Sharing en Check verbannen Delftse wijk uit gebied**



Sometimes 1 or 2 shared scooters here

04

# Urban Design in the Netherlands





# Urban Design in the Netherlands

## Research and Design Guidelines

- [CROW](#) - Research in traffic, transport and infrastructure, standardisation in this sector, transfer of knowledge and knowledge management (issuing design guidelines).
- [SWOV](#) - Institute for Road Safety Research, it is our mission to use knowledge from scientific research to contribute to safer road traffic.
- [Platform Veilig Fietsen](#) – CROW Fietsberaad, research on safety and cycling, share and pool knowledge, education on safe cycling.



# Design Philosophy

## Sustainable Safety

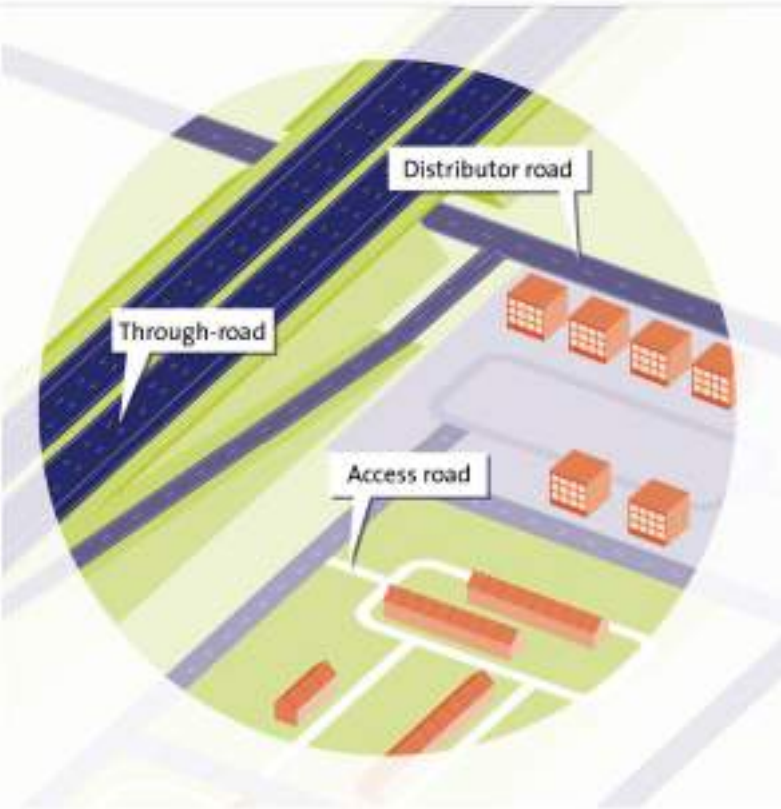
- Reduce accidents by setting human behaviour central;
- Focus on:
  - Needs
  - Competencies
  - Limitations
  - Vulnerability of traffic participants





# Design Philosophy

## Sustainable Safety Design Principles



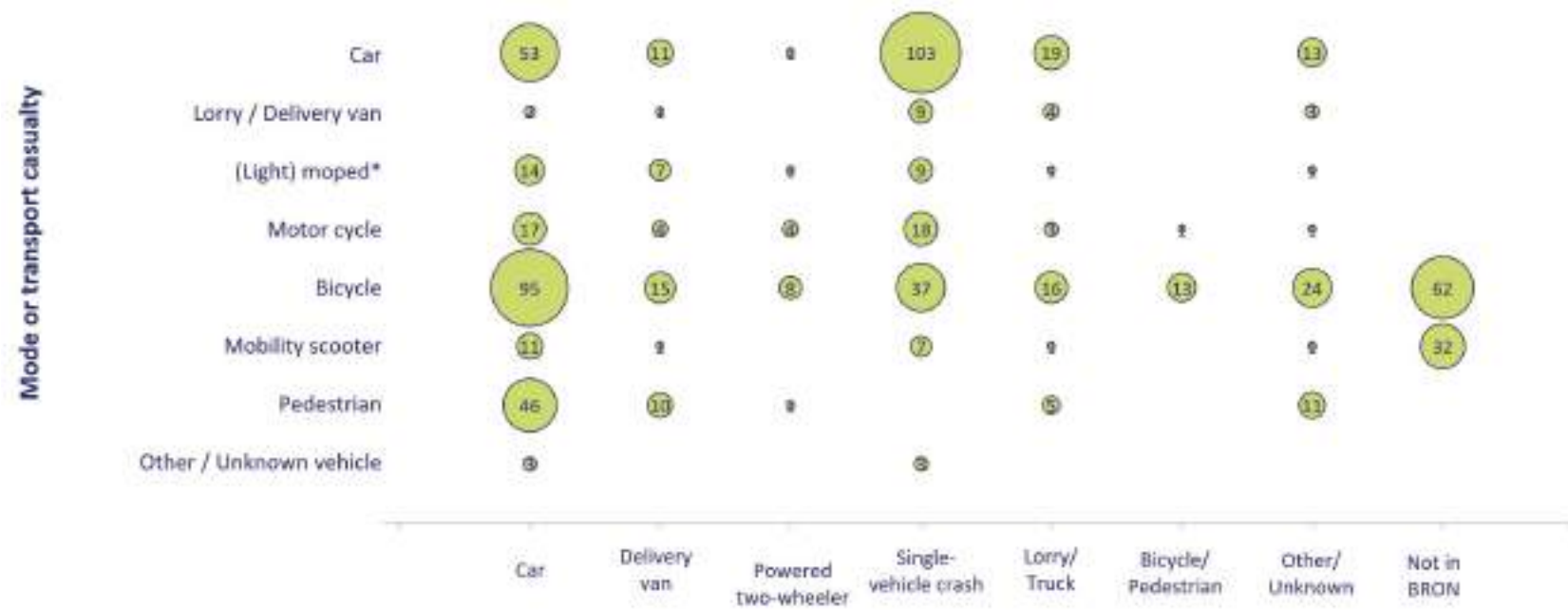
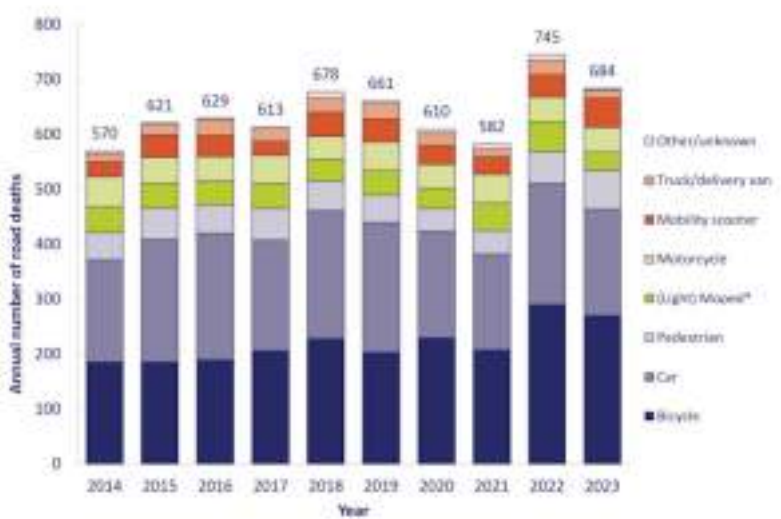
- **Functionality of roads:** the road is designed for its proper use
- **(Bio)mechanics:** alignment of speed, direction, mass, dimensions, and protection of road users
- **Psychology:** alignment of traffic environment and competencies of road users

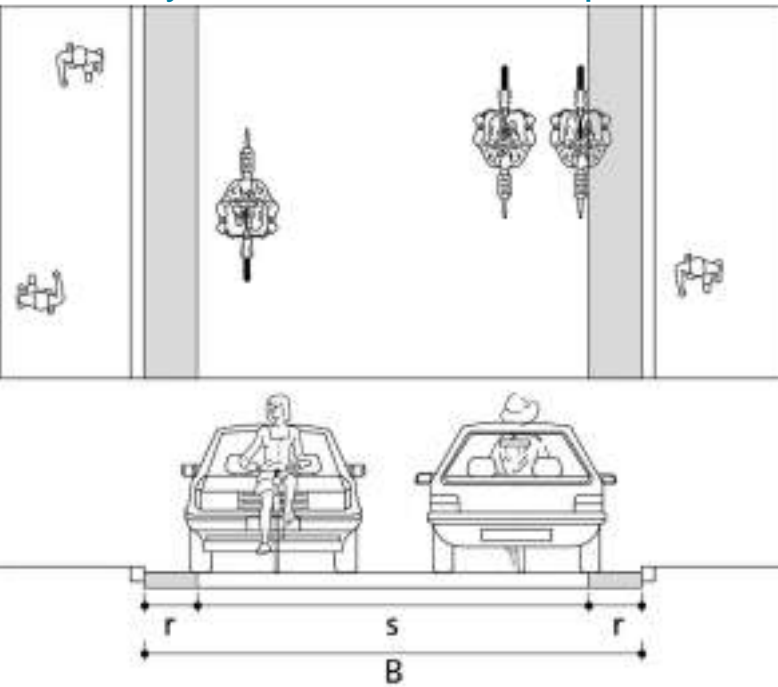


# Design Philosophy

## Sustainable Safety Organizational Principles

- Responsibility: traffic participants will obey the rules, design will be forgiving in case of traffic errors
- Learning and Innovation: learn from accidents to avoid in future





$r = 0,30 - 0,40 \text{ m}$

$s = 3,00 - 4,00 \text{ m}$

$B = 3,60 - 4,80 \text{ m}$



- traffic sign L51
- preferably closed pavement
- red pavement color (for recognizability of bicycle route)
- priority regulation at intersections (bicycle street has right of way)
- route guidance at decision points (where necessary)
- no parking on the roadway

# Design Guidelines

Kennisbank CROW

kennisplatform  
**CROW**

| ONLINE KENNISBANK

- Design guidelines for road design
  - Inside urban area
  - Outside urban area
  - Public transport (buses, tram)
- And much more:
  - Traffic management (e.g. Handbook on traffic signalisation)
  - Pavements
  - Bridges and locks
  - Road maintenance
  - Etc. etc...



05

# The Challenge!

*Renovated Campuses  
need  
Renovated Connections*

# Agenda this afternoon



- **1:15 PM – 2:00 PM | Keynote: Current situation and challenges around Delft Campus station**  
**Speaker:** Rutger van der Pijl
- **2:00 PM – 3:00 PM | Interactive Session: Redesigning the Connection between Delft Campus Train Station and TU Delft Campus**  
**Facilitators:** (Maria, Abel, Billy, Linette, Tom, Nicole)
- **3:00 PM – 3:30 PM | Coffee Break & Networking**
- **4:00 PM – 4:45 PM | Regroup into new teams with a representative from each aspect, combining the different perspectives**
- **4:45 PM – 5:15 PM | Poster exposition in the bar (Cafe X)**
- **5:15 PM – 5:30 PM | Closing Remarks & Next Steps**
- **5:30 PM – 6:30 PM | Networking Happy Hour: “Dutch Drinks”**



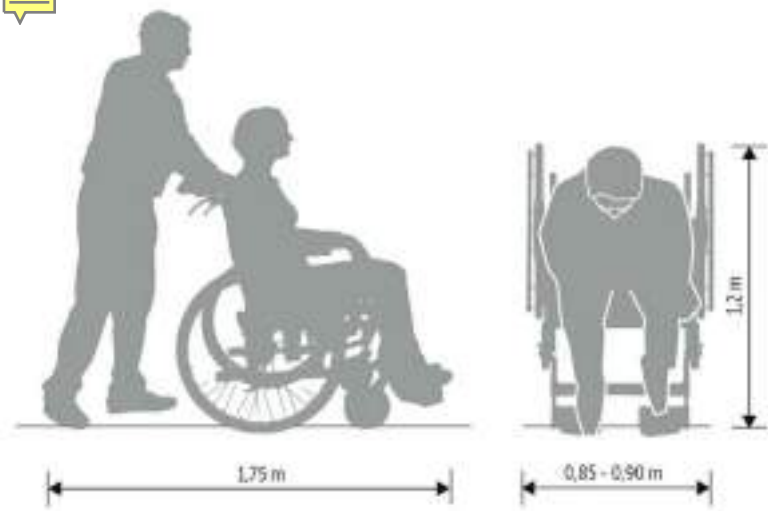
# Interactive session C2C

With Sustainable Safety in mind design better connections between Delft campus station and TU Delft campus.

## Workgroups:

1. Greenery: design a greener, more pleasant route;
2. Safety: make the design safer regarding both traffic and social safety;
3. Improve the route for Active Modes (pedestrians and cyclists);
4. Design safe and effective micromobility hubs (shared transport);
5. Make a direct public transport connection.





# Interactive session C2C

Questions are welcome!  
For instance:



- What are the sizes of someone in a wheelchair?
- Can I make an extra bridge?
- Can we design a suspension monorail?
- What is a drawback of shared mobility?
- Etc.



# Success with the challenge!